

**Tillbridge Solar Project
EN010142**

**Volume 6
Environmental Statement**

**Figure 12-2: Initial Site Constraints and Opportunities
Plan (originally issued June 2022)
Document Reference: EN010142/APP/6.3**

**Regulation 5(2)(a)
Infrastructure Planning (Applications: Prescribed Forms and
Procedure) Regulations 2009**

**April 2024
Revision Number: 00**

tillbridgesolar.com

LEGEND

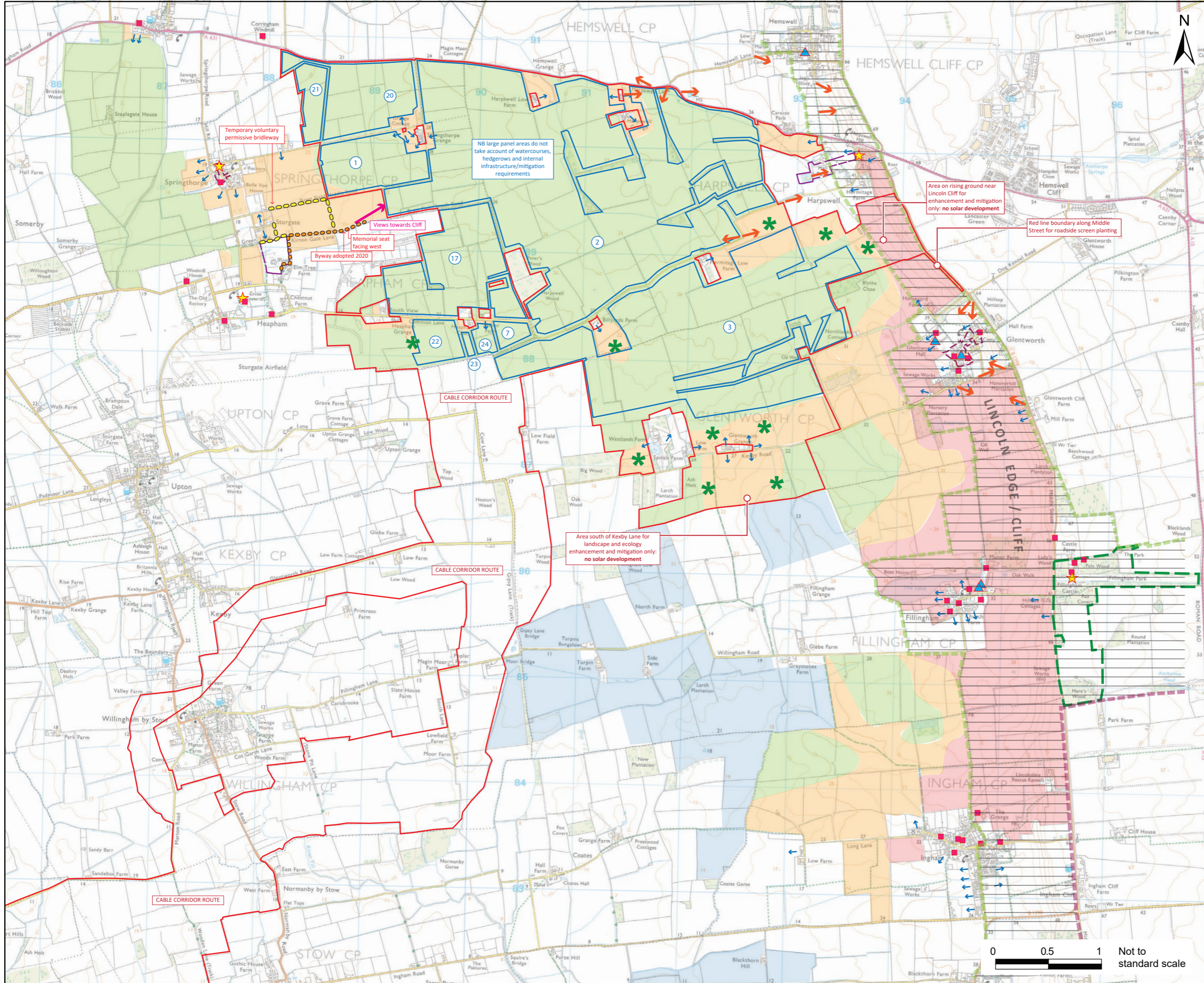
- Indicative areas of solar panels and associated infrastructure (developable areas)
- EIA Scoping Scheme Boundary
- Higher landscape/visual sensitivity areas: little or no opportunity for development without extensive mitigation. Constraints include planning designations, collective open views from settlements and setting of listed buildings.
- Medium landscape/visual sensitivity areas: development will likely require microsetting and/or higher levels of mitigation. Constraints open private residential views; sensitive elevated topography and proximity to Public Rights of Way or roads with amenity value.
- Lower landscape/visual sensitivity areas: greater capacity for development due to absence of sensitive receptors and landscape/visual constraints.
- ← Selected key views identified in Neighbourhood Plans
- ← Open views from residential receptors (based on assumptions from aerial mapping and site surveys)
- Byway (adopted 2020, not on OS map)
- Temporary voluntary brideway (Springthorpe)
- Area of Great Landscape Value : (Central Lincolnshire Local Plan Policy LP17)
- Registered Park and Garden (non-designated Heritage Asset): Fillingham Castle
- Scheduled Monuments (designated heritage asset)
- ★ Grade I listed buildings
- ▲ Grade II* listed buildings
- Grade I listed buildings
- Cottam solar farm (indicative outline)
- ✱ Potential priority areas for mitigation, including woodland screening

NOTES
Contains Ordnance Survey Data © Crown Copyright and database right 2024.
© Crown copyright and database rights 2024. Ordnance Survey 0100031673.

ISSUE PURPOSE
DCO Submission
PROJECT NUMBER
60677969

FIGURE TITLE
Initial Site Constraints and Opportunities Plan (originally issued June 2022)

FIGURE NUMBER
Figure 12-2



This drawing has been prepared for the use of AECOM's client. It may not be used, modified, reproduced or relied upon by third parties, except as agreed by AECOM or as required by law. AECOM accepts no responsibility, and denies any liability whatsoever, to any party that uses or relies on this drawing without AECOM's express written consent. Do not scale this document. All measurements must be obtained from the stated dimensions.